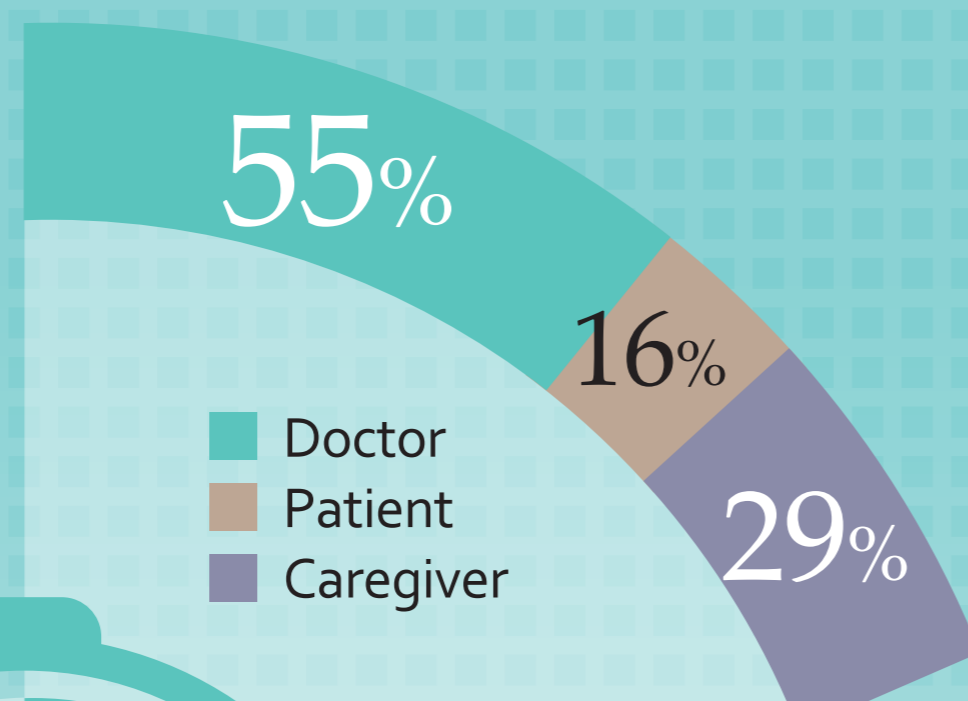


Dialogue in Design

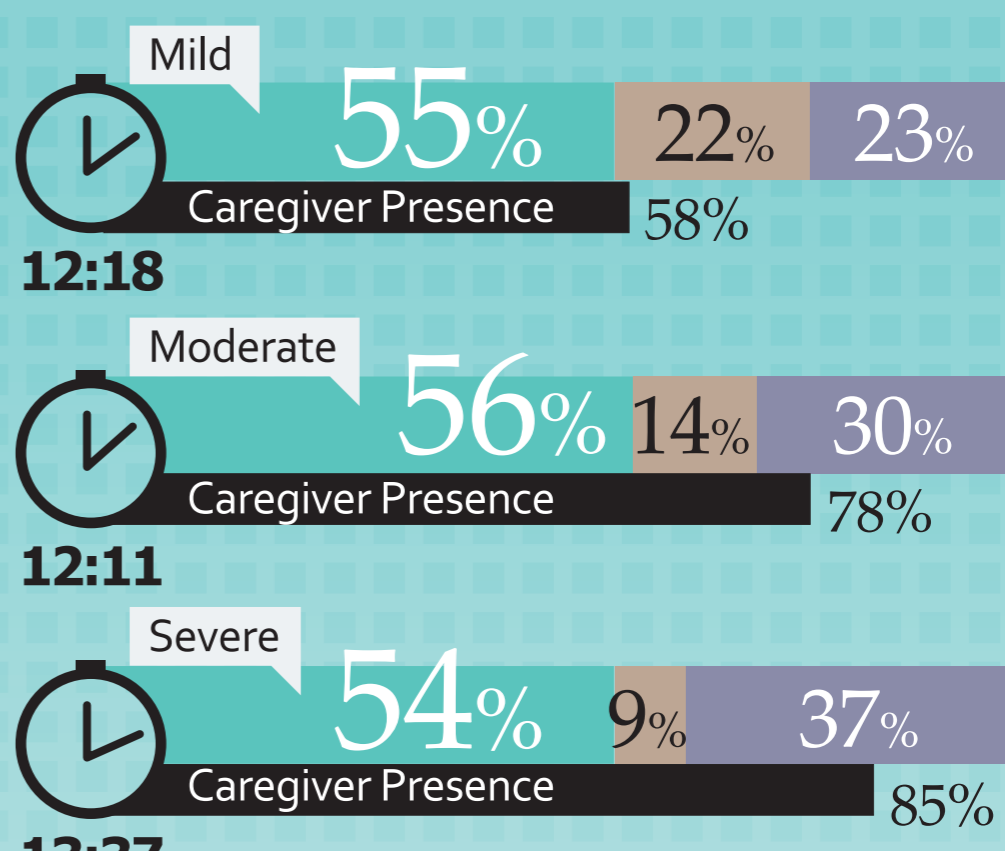
Alzheimer's Disease



Average Length of Interaction



Interaction by Disease Severity*



12:26

Caregiver Presence

73% of visits

Physicians

Most Popular Questions Asked

Patients

- Do you have difficulty remembering the names of close family members?
- Have you considered or planned for possible home care or assisted living?
- Are you experiencing any side effects from the medication you're taking?

- What are the names and dosage levels of all of my current medications?
- What strategies can I use to slow the progress of dementia?
- Are there any new medications available or being developed for Alzheimer's Disease?

Living Arrangement

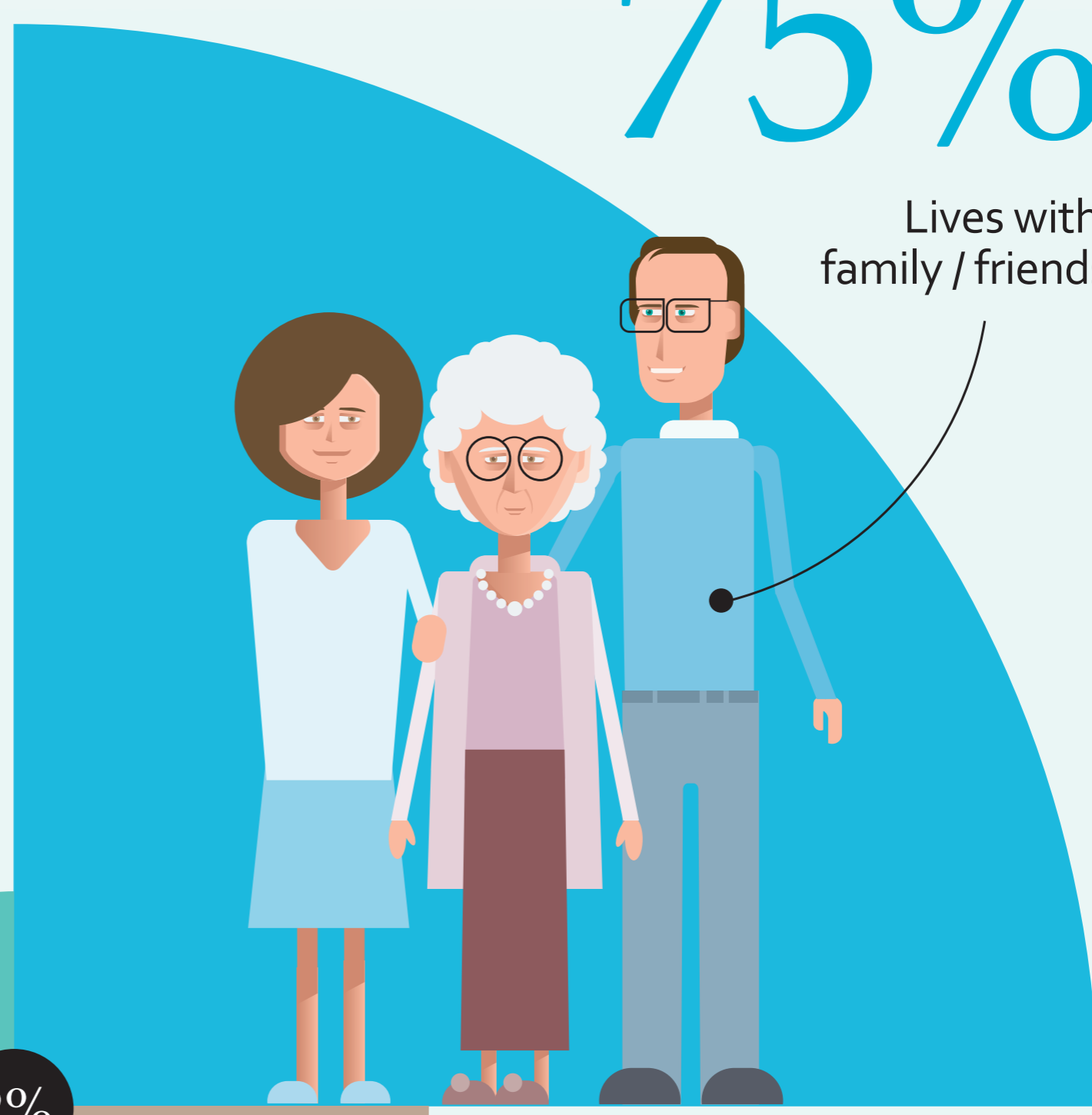
3%

Lives with non-family caregiver



75%

Lives with family / friends



9%

Lives in assisted living facility

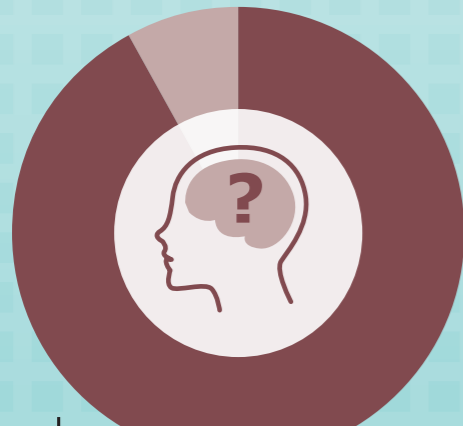


11%

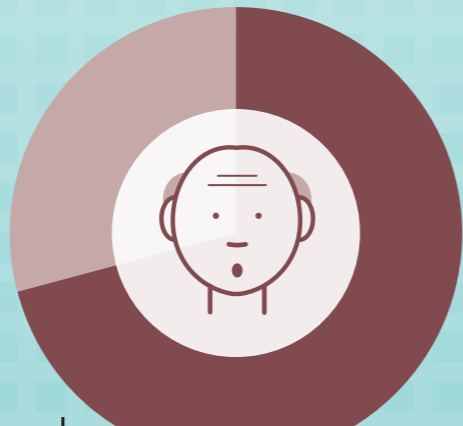
Lives alone



Symptoms Reported



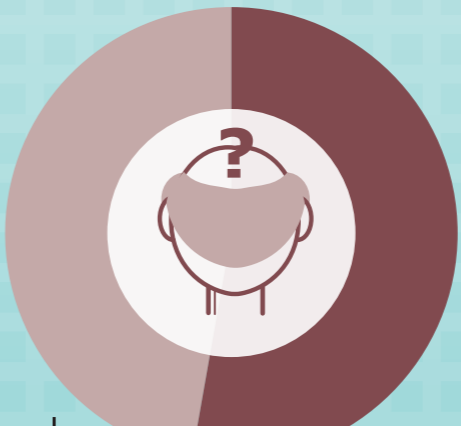
Memory loss



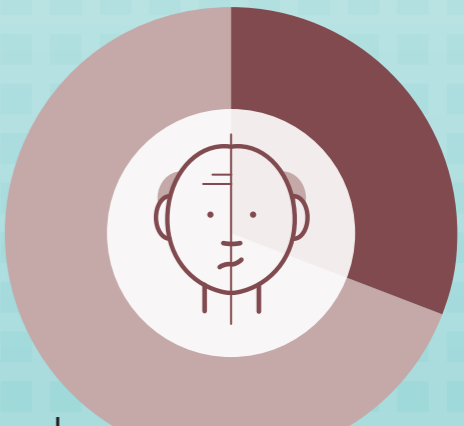
Confusion



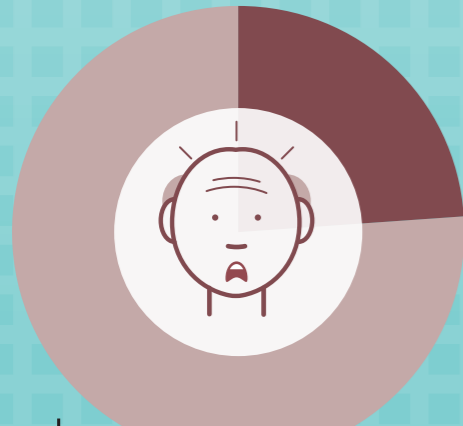
Difficulty in concentrating



Disorientation



Personality changes



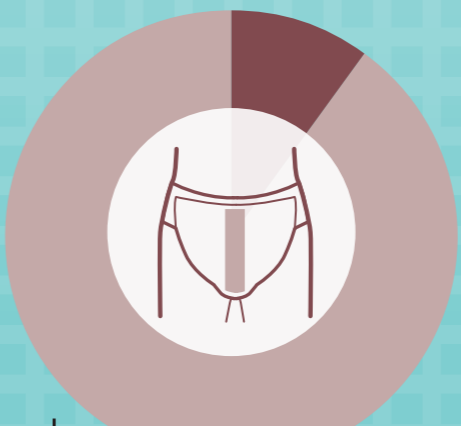
Disturbances in behavior and appearance



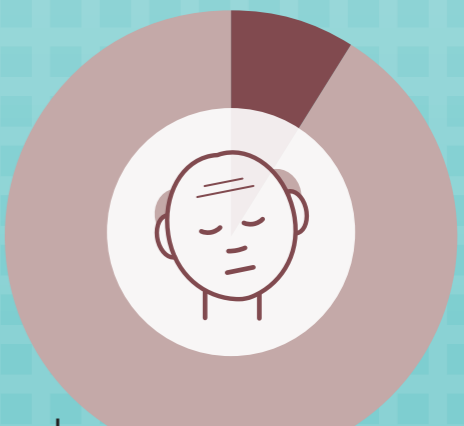
Mood swings



Unable to engage in conversation



Loss of bladder or bowel control



Uncooperative

ABOUT THIS DATA: 1,286 Alzheimer's Disease conversations recorded by Verilogue May 2008 through September 2012



*Severity as indicated by physician's post-interaction survey
© Copyright Verilogue, Inc. All rights reserved.

www.verilogue.com